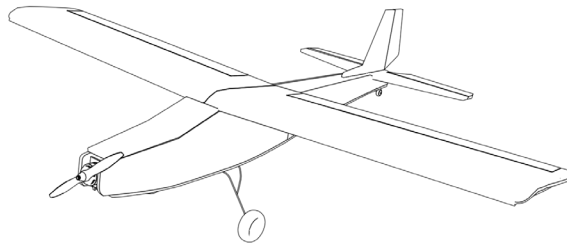
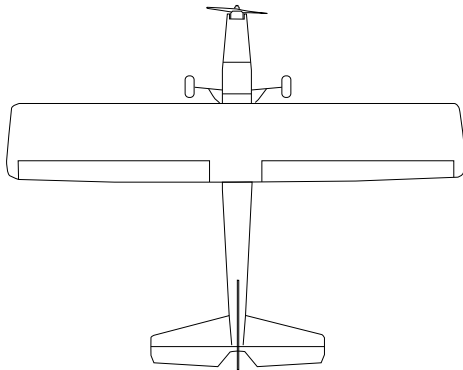
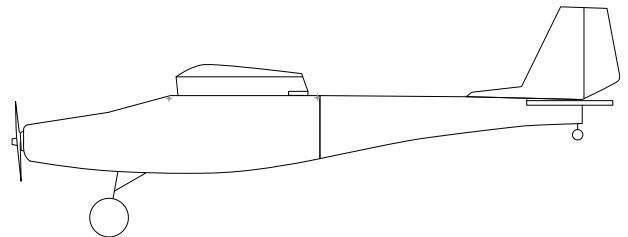
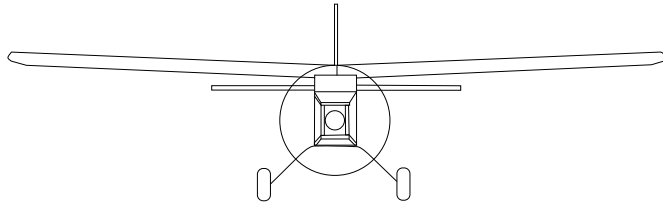


# JOYTRAINER<sup>mini</sup>



JOYPLANES RC

RC Trainer Airplane  
1050 mm of Wingspan (41.3")  
Designed by Joyvel Osorio.



## Technical data:

Number of channels: 4, Ailerons, elevator, rudder and throttle.

Size: 1050mm wing span and 720mm long.

Average maximum weight without battery: 560g - Maximum allowable weight with battery: 860g

Material: 5mm thick foam board.

Landing gear: 2mm steel wire and wheels from 50mm to 80mm in diameter.

2206 or similar motor with 1600KV - 2600KV.

5 " - 7" propeller (use the one recommended by the motor manufacturer).

Recommended battery for beginners and stable flights: 2S from 2200 - 4000 mAh. (Do not fly on windy days with this configuration).

For more power: 3S from 1500 - 3200 mAh. (You can fly on a bit windy days and do maneuvers).

For the construction, use 2 sheets of 5mm foam board size A1 or 3 sheets of size A2, you can use a similar material such as XPS foam.

Recommended glue: Hot glue gun. Other glues work too, avoid using aggressive glues with foam like CA.

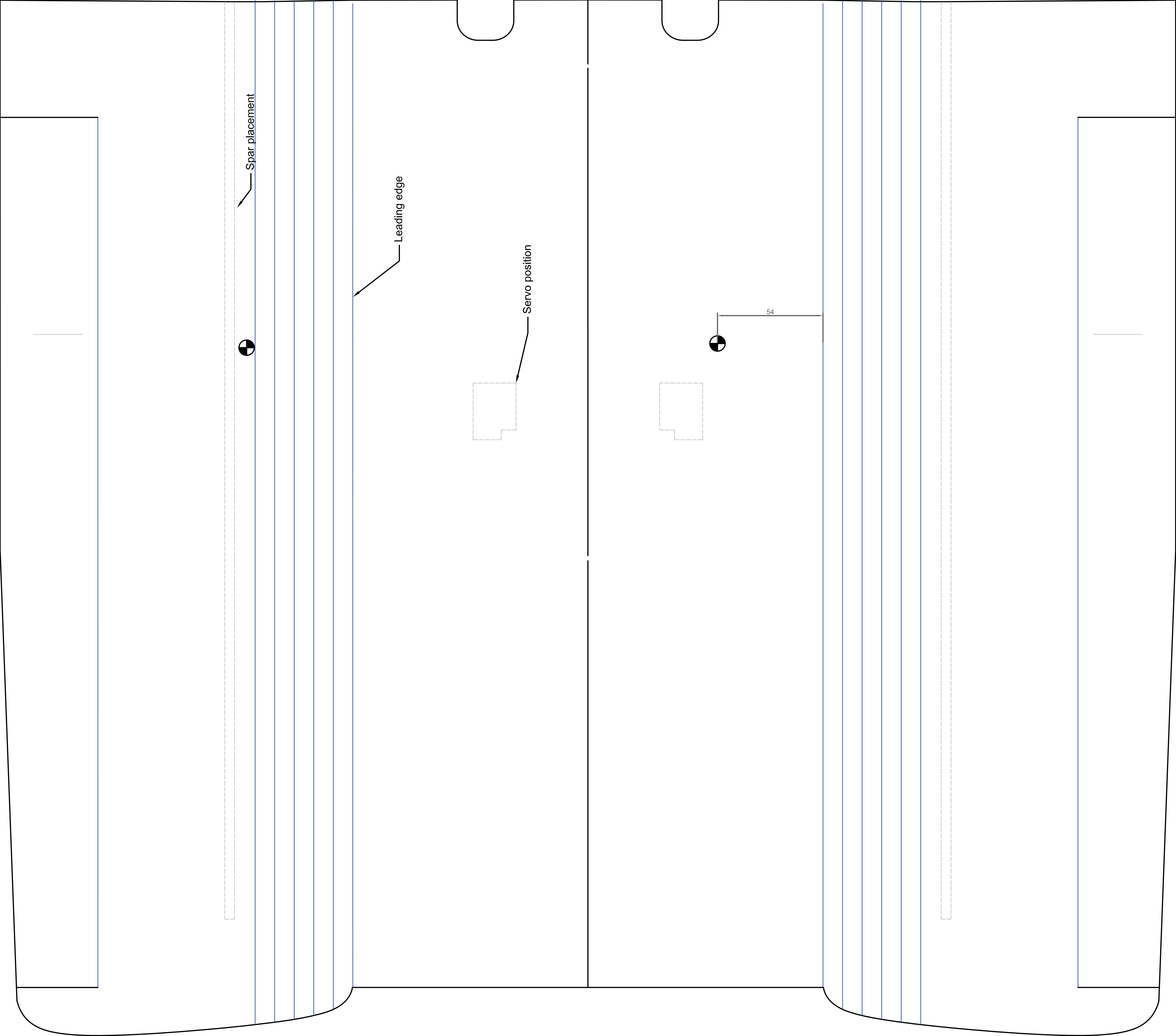
Control surfaces rates:

Ailerons 17mm up and down.

Elevator 20mm up and down.

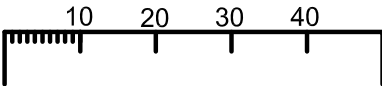
Rudder 25mm up and down.

Use exponential of 70% in ailerons.

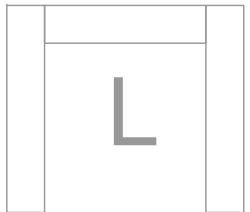


JOYPLANES RC

Joytrainer mini V1.3  
Size A1

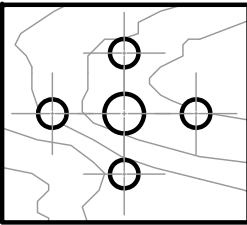


RC trainer airplane made from foam board.  
1050 mm (41.3") of wingspan.  
Designed by Joyvel Osorio.

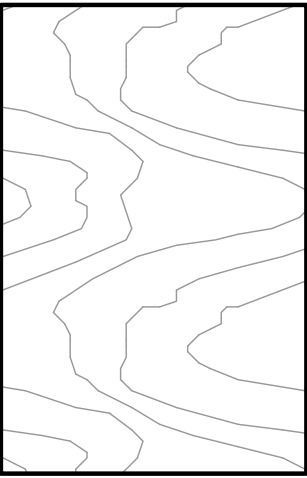


Glue the side panels to the sides of the other panel.

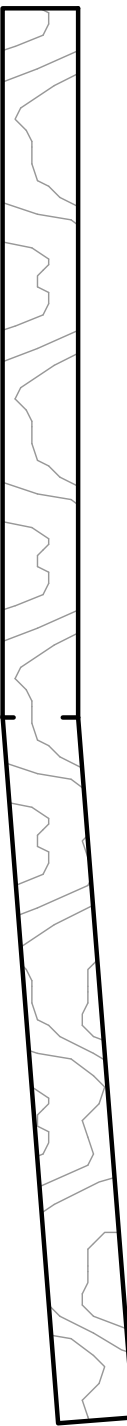
- 50% cut
- Cut all the way
- References



Motor base (Plywood  
3-5mm)



Landing gear base  
(plywood 3-5mm)



Central spar (plywood) 3-5mm

Wing dihedral

50mm

4-5°

Motor incidence, from 4° to 5°

4°

Foamboard wedge

Bottom part of fuselage X1

Wing spars

Dihedral gauge

Front reinforcement X2

Bottom and top front lids X2

Wing wedge

Wing tips X2 (opcional)

